

DIGITAL DIVIDE

CONFERENCE HELD AT UERJ
RIO DE JANEIRO, FEBRUARY 16th-20th



SCIENCE EDUCATION
THROUGH COMICS



LISHEP 2004

PRESENTATION

Although digital divide reaches through several social classes it is a more serious barrier for people living in developing countries.

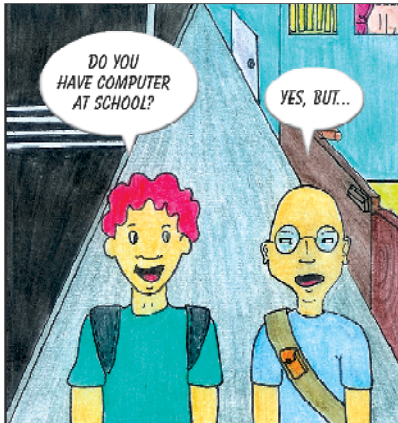
We have asked high school students who take part in the project "Science Education Through Comics" under the supervision of prof. Francisco Caruso (UERJ & CBPF) to freely express their critical views on this subject through comics. All students involved in this project attend public schools with restrict access to the digital world. Twelve strips have been selected to form the 2004 calendar presented in this box.

The strips were drawn by the students Alex Alves de Souza, Marcela Gomes da Silva, Silas Ribeiro Rodrigues and the final art was made by Erick Hoepfner. We thank them all for their dedication and enthusiasm during all the stages of this project.

Alberto Santoro

www.cbpf.br/eduhq

JANUARY



S	M	T	W	T	F	S
				01	02	03
04	05	06	07	08	09	10
11	12	13	14	15	16	17
18	19	20	21	22	23	24
25	26	27	28	29	30	31

2004

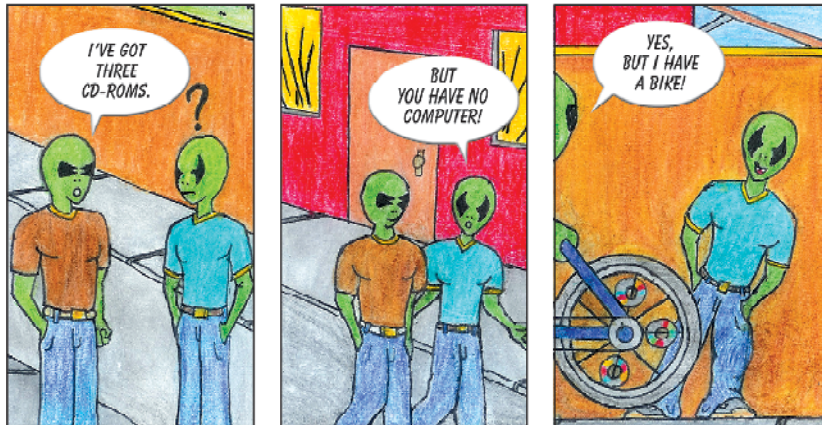
FEBRUARY



S	M	T	W	T	F	S
01	02	03	04	05	06	07
08	09	10	11	12	13	14
15	16	17	18	19	20	21
22	23	24	25	26	27	28
29						

2004

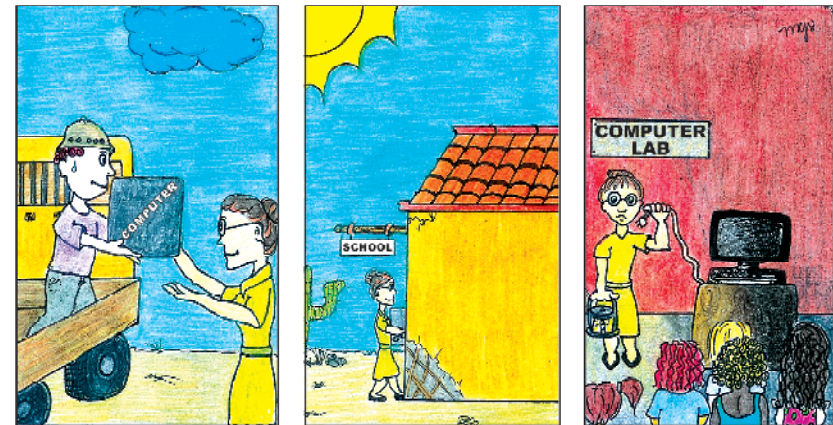
MARCH



S	M	T	W	T	F	S
	01	02	03	04	05	06
07	08	09	10	11	12	13
14	15	16	17	18	19	20
21	22	23	24	25	26	27
28	29	30	31			

2004

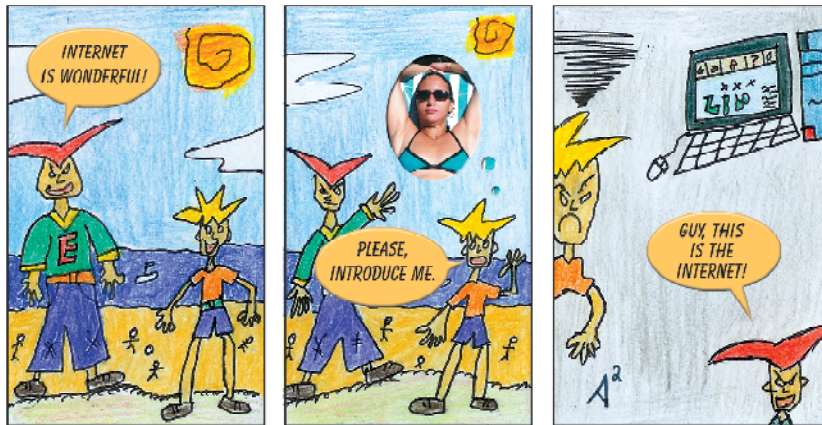
APRIL



S	M	T	W	T	F	S
				01	02	03
04	05	06	07	08	09	10
11	12	13	14	15	16	17
18	19	20	21	22	23	24
25	26	27	28	29	30	

2004

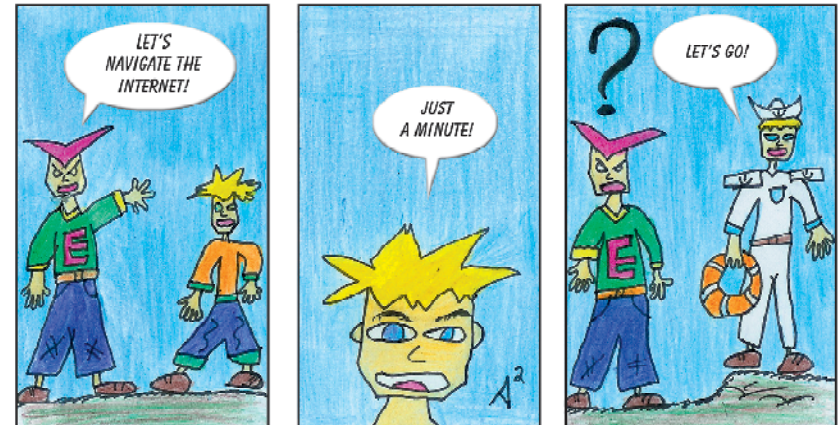
MAY



S	M	T	W	T	F	S
						01
02	03	04	05	06	07	08
09	10	11	12	13	14	15
16	17	18	19	20	21	22
23	24	25	26	27	28	29
30	31					

2004

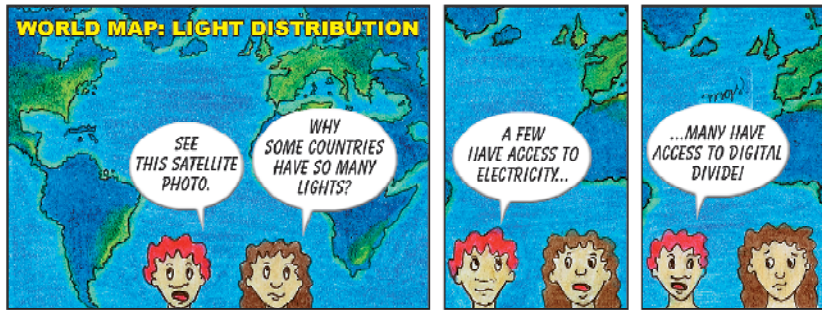
JUNE



S	M	T	W	T	F	S
		01	02	03	04	05
06	07	08	09	10	11	12
13	14	15	16	17	18	19
20	21	22	23	24	25	26
27	28	29	30			

2004

JULY



S	M	T	W	T	F	S
				01	02	03
04	05	06	07	08	09	10
11	12	13	14	15	16	17
18	19	20	21	22	23	24
25	26	27	28	29	30	31

2004

AUGUST



S	M	T	W	T	F	S
01	02	03	04	05	06	07
08	09	10	11	12	13	14
15	16	17	18	19	20	21
22	23	24	25	26	27	28
29	30	31				

2004

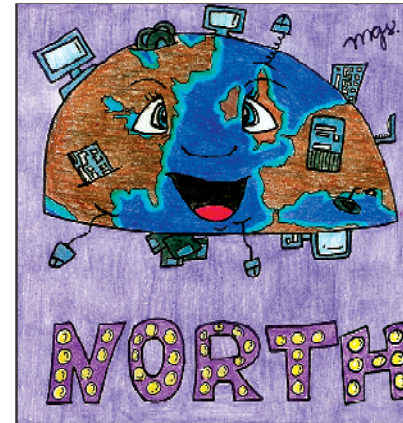
SEPTEMBER



S	M	T	W	T	F	S
			01	02	03	04
05	06	07	08	09	10	11
12	13	14	15	16	17	18
19	20	21	22	23	24	25
26	27	28	29	30		

2004

OCTOBER



S	M	T	W	T	F	S
					01	02
03	04	05	06	07	08	09
10	11	12	13	14	15	16
17	18	19	20	21	22	23
24	25	26	27	28	29	30
31						

2004

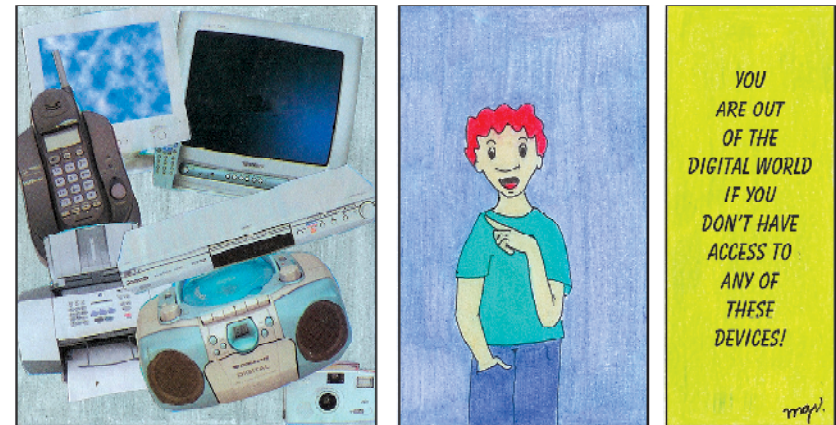
NOVEMBER



S	M	T	W	T	F	S
	01	02	03	04	05	06
07	08	09	10	11	12	13
14	15	16	17	18	19	20
21	22	23	24	25	26	27
28	29	30				

2004

DECEMBER



S	M	T	W	T	F	S
			01	02	03	04
05	06	07	08	09	10	11
12	13	14	15	16	17	18
19	20	21	22	23	24	25
26	27	28	29	30	31	

2004

